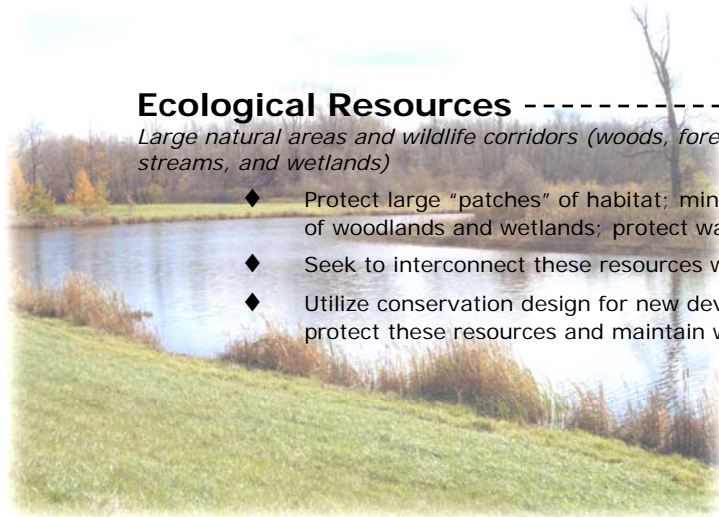


OGDEN OPEN SPACE VISION MAP

Ecological Resources

Large natural areas and wildlife corridors (woods, forested areas, streams, and wetlands)

- ◆ Protect large "patches" of habitat; minimize fragmentation of woodlands and wetlands; protect water quality.
- ◆ Seek to interconnect these resources with greenbelts.
- ◆ Utilize conservation design for new development to protect these resources and maintain water quality.



Agricultural Landscapes

Farms, Orchards, Dairy farms, and roadside views; critical mass of active farmland and open lands in the southwestern part of town

- ◆ Protect and promote active farmlands as key contributors to the town's economy, rural character, and scenic quality. Protect and promote farmlands for the open space and tourism value they provide.
- ◆ Aim to protect a critical and contiguous mass of active agricultural lands to support farming.
- ◆ If development is to occur on farmlands, seek to minimize the impacts of development through conservation design and obtain open space and trail amenities as feasible.



Scenic Landscapes

Intrinsic rural and historic character; views from scenic roads, Town Pump, Adam's Basin, cultural landscapes and traditional rural settlement patterns

- ◆ Maintain and protect scenic roadway corridors throughout the town.
- ◆ Protect and enhance "country-to-village" scenic gateway views (Route 531 and Route 259).
- ◆ Protect and enhance the historic character of the Village of Spencerport, Adam's Basin, and Town Pump.
- ◆ Protect and expand access (visual and/or physical) to scenic areas.

Village of Spencerport

Link the town and village to its resources and amenities.

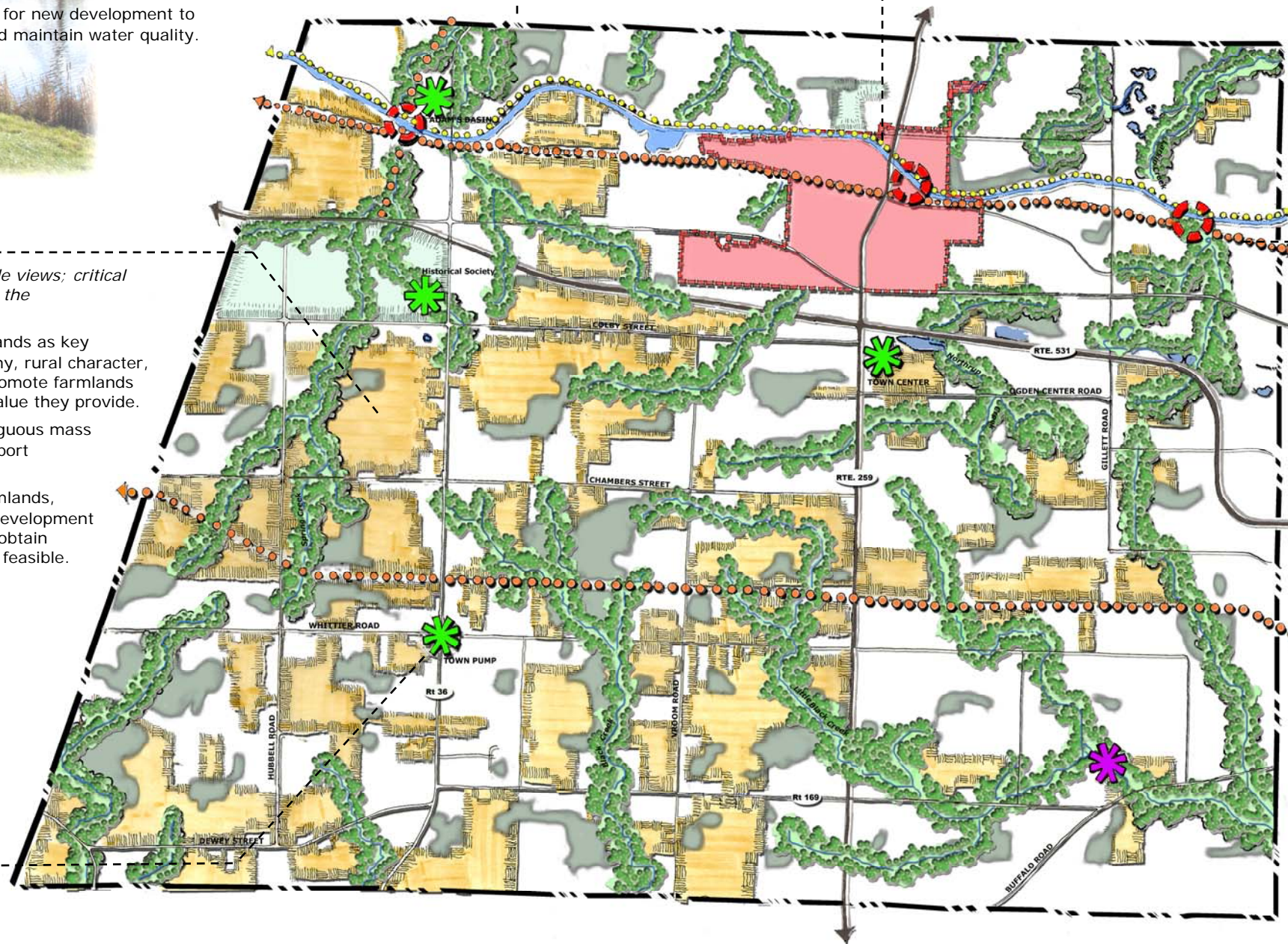
- ◆ Strengthen the village as the center of the community and aim to highlight its unique character and history.
- ◆ Explore and expand connections and access between the village and the town's cultural, historical, recreational, and open space resources and amenities.



Greenbelt Areas

Streams, creeks, and tributaries throughout the town that serve as primary wildlife corridors, animal habitat, and greenbelts

- ◆ Protect and enhance waterways and water quality.
- ◆ Opportunity to expand active and passive recreation areas and trails (e.g., fishing, hiking, bicycling).



LEGEND:

- | | | | |
|----------------------------------|------------------------|---------------------------|--------------------------|
| - Parks | - Forested Areas | - Streams | - Community Connections |
| - Village of Spencerport | - Erie Canal | - Proposed Trails | - Town Boundary |
| - Proposed Greenbelt Concept | - Wetlands/Waterbodies | - Existing Trails | - Local Roadways |
| - Active/Core Agricultural Lands | - Proposed Park | - Major Cultural Landmark | - Major Roadway Corridor |