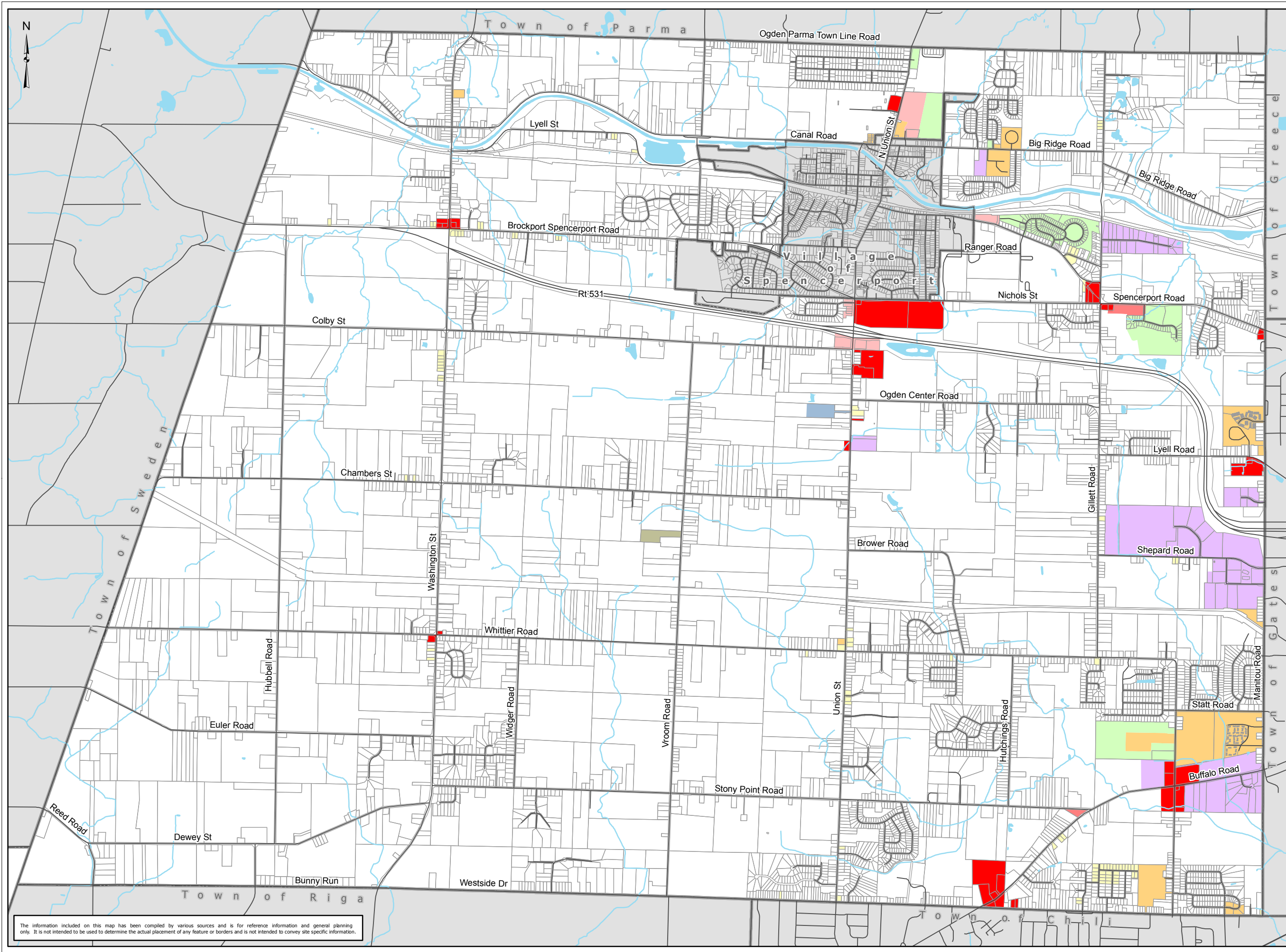




Town of Ogden Official Zoning Map



Key to Features

- Water Bodies
- Parcel Boundaries
- GC - General Commercial
- NC - Neighborhood Commercial
- RB - Restricted Business
- LI - Light Industrial
- SC - Senior Citizen Housing District
- R-1 - Single Family Residential
- R-2 - Two Family Residential
- RR - Rural Residential
- MFR - Multiple Family Residential
- SSSO - Self-Service Storage Overlay
- Village of Spencerport

1 inch = 3,000 feet

Last Revised: February 2016

- *Adopted under resolution 144, April 2008
- *Adopted under resolution 161, May 2008
- *Adopted under resolution 163, May 2008
- *Adopted under resolution 203, July 2008
- *Adopted under resolution 148, May 2009
- *Adopted under resolution 101, Feb. 2016

Map Information
 Created: December 18, 2007
 Revised: February 29, 2016
 Created By: Bergmann Associates
 Location: \\ogden\GIS\Data\GIS\Projects\Zoning\Zoning_11x17.mxd
 Data Sources: Town of Ogden, Monroe County

The information included on this map has been compiled by various sources and is for reference information and general planning only. It is not intended to be used to determine the actual placement of any feature or borders and is not intended to convey site specific information.